

THE EARTH REELING TO AND FRO LIKE A DRUNKARD

Over the past few years events have occurred that have caused me to ponder. I have always liked to look at the sky, both day and night. I have been alive for 56 years now and most of that time (aside from my very young childhood) have made note of where things are supposed to be and how things have particular order and cadence. For instance, I like to go out when the seasons officially change to note where the sun is rising, as well when and where it is setting. I also like to note moon rise and moon set to note the waning or waxing moon. I've also grown accustomed to how the moon is supposed to look when it is full; where the seas are and where certain large craters are located. I guess I've always been fascinated with the sky and constantly turn my attention upward. After coming to faith in Yeshua back in 1979 I have intensified my gaze upward because we're told about certain celestial signs and wonders that would precede and coincide with the "end of days."

It is because of this that when I see something anomalous, I have to research whether I am seeing something that really isn't there, or something that others are seeing at the same time. For instance, I noticed that the Sun over the past five years or so has been rising farther north than it used to. I also noticed that the moon appears to be different, sort of cocked to one side, like the face of a clock that has been turned. So, let's look at some sources that say that things have indeed changed:

"Their Sky Has Changed!" Inuit elders sharing information with NASA regarding Earth's "WOBBLE"



We are all obsessed with the weather here in the West and rightly so with the unusual weather we have had to endure recently, extreme has become the new norm but what about our brothers and sisters living on the Canadian Arctic circle?

Inuit knowledge and climate change was discussed by delegates at the recent global warming summit in Copenhagen and what the Eskimo elders are saying have NASA, scientists and experts alike worried....Global warming might not be the whole story!

It seems the Inuit elders are also witnessing strange and unfathomable weather up there in the North.

The elders talk about how their world has changed, how it was then and how it is now. It is a worrying picture, a picture of melting glaciers and thinning or disappearing sea ice.

Seals with burns on their coats and covered with sores and a thinner hide, the Seal skin has deteriorated and while scientists maintain man made pollution is contributing to climate change the elders are convinced something much much bigger is going on! Astonishingly what the elders are saying is global warming is not the whole story...

The elders maintain the Sun doesn't rise were it used too, they have longer day light to hunt and the Sun is higher than it used to be and warms up quicker than before.

The elders who were interviewed across the north all said the same thing, their sky has changed.

The stars the Sun and the Moon have all changed affecting the temperature, even affecting the way the wind blows, it is becoming increasingly hard to predict the weather, something that is a must on the Arctic.

The elders all agree, they believe the Earth has shifted, wobbled or tilted to the North.

Zacharius Kunuk has literally been e-mailing NASA with information from the elders regarding changes in the sky and the position of the Earth on its axis....

The elders are trying to reach out to warn the world of the effects of environmental change.

Exploring centuries of Inuit knowledge, allowing the viewer to learn about climate change first-hand from Arctic residents themselves, the film portrays Inuit as experts regarding their land and wildlife and makes it clear that climate change is a human rights issue affecting this ingenious Indigenous culture. Hear stories about Arctic melting and how Inuit believe that human and animal intelligence are key to adaptability and survival in a warming world.

Zacharius Kunuk wonderful film can be seen [Here](#)

[Gary Walton](#)

(Source: <http://www.thebigwobble.org/2014/12/their-sky-has-changed-inuit-elders.html>)

Furthermore, there are others with “credentials” that are also verifying that the sky is indeed different, and they suggest that there has been a polar shift.

On the anomalous secular increase of the eccentricity of the orbit of the Moon

Lorenzo Iorio

(Submitted on 1 Feb 2011 (v1), last revised 22 Apr 2011 (this version, v6))

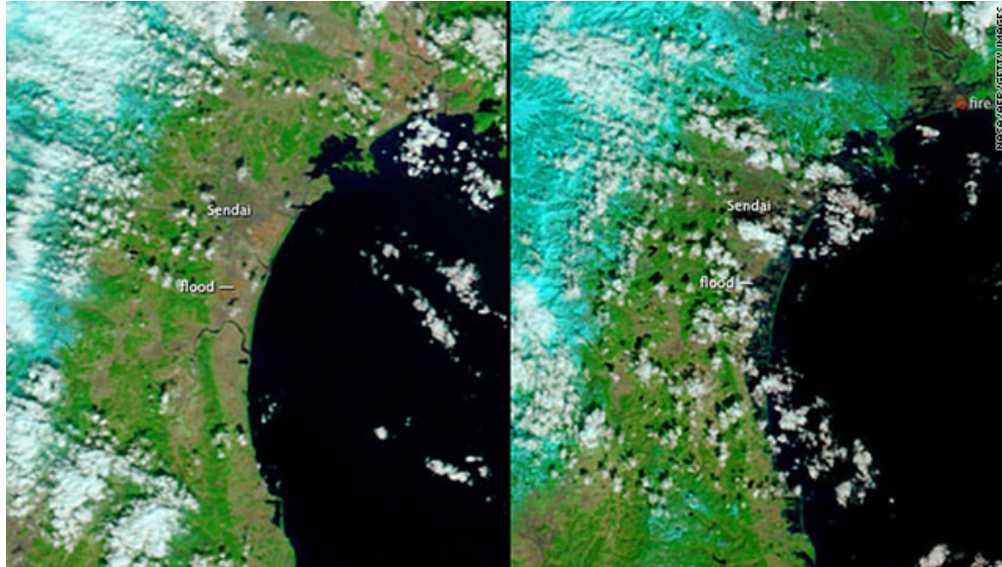
A recent analysis of a Lunar Laser Ranging (LLR) data record spanning 38.7 yr revealed an anomalous increase of the eccentricity of the lunar orbit amounting to $de/dt_{meas} = (9 \pm 3) 10^{-12} \text{ yr}^{-1}$. The present-day models of the dissipative phenomena occurring in the interiors of both the Earth and the Moon are not able to explain it. We examine several dynamical effects, not modeled in the data analysis, in the framework of long-range modified models of gravity and of the standard Newtonian/Einsteinian paradigm. It turns out that none of them can accommodate de/dt_{meas} . Many of them do not even induce long-term changes in e ; other models do, instead, yield such an effect, but the resulting magnitudes are in disagreement with de/dt_{meas} . In particular, the general relativistic gravitomagnetic acceleration of the Moon due to the Earth's angular momentum has the right order of magnitude, but the resulting Lense-Thirring secular effect for the eccentricity vanishes. A potentially viable Newtonian candidate would be a trans-Plutonian massive object (Planet X/Nemesis/Tyche) since it, actually, would affect e with a non-vanishing long-term variation. On the other hand, the values for the physical and orbital parameters of such a hypothetical body required to obtain the right order of magnitude for de/dt are completely unrealistic. Moreover, they are in neat disagreement with both the most recent theoretical scenarios envisaging the existence of a distant, planetary-sized body and with the model-independent constraints on them dynamically inferred from planetary motions. Thus, the issue of finding a satisfactorily explanation for the anomalous behavior of the Moon's eccentricity remains open. (source: arXiv:1102.0212v6 [gr-qc])

Of course, there are those who will refute the notion that the Earth has indeed shifted on its axis. Such people will cite that the airport runways in Tampa, Florida have been reassigned their nomenclature to mark a shift in magnetic north. They always come onto the scene saying that any polar shift would have to be “magnetic” and that a polar axis shift would create earth changes that would devastate earth and all life thereupon. However, many of those same people will say that the Earth's polar axis has changed over the history of the planet. The fact that scientific theory states that in order for something to become a fact, it has to be seen, or evidence has to be produced showing that the event happened and that it is repeatable. If it is repeatable, then it can happen again, right? And who is to say that it will be a drastic shift and won't happen in small increments thus lessening any potential harm to the planet and its residents.

Quake moved Japan coast 8 feet, shifted Earth's axis

By Kevin Voigt, CNN

April 20, 2011 10:16 a.m. EDT



Images released by NASA show Japan's northeast coast before, left, and after flooding from the quake-induced tsunami.

STORY HIGHLIGHTS

- *Friday's powerful earthquake appears to have moved the main island of Japan by 8 feet*
- *Report: The 8.9-magnitude earthquake shifted the Earth on its axis by 4 inches*
- *The quake triggered more than 160 aftershocks in the first 24 hours*
- *Similar strength to the 2004 quake and tsunami that killed more than 200,000 people*

(CNN) — The powerful earthquake that unleashed a devastating tsunami Friday appears to have moved the main island of Japan by 8 feet (2.4 meters) and shifted the Earth on its axis.

“At this point, we know that one GPS station moved (8 feet), and we have seen a map from GSI (Geospatial Information Authority) in Japan showing the pattern of shift over a large area is consistent with about that much shift of the land mass,” said Kenneth Hudnut, a geophysicist with the U.S. Geological Survey (USGS).

Reports from the National Institute of Geophysics and Volcanology in Italy estimated the 8.9-magnitude quake shifted the planet on its axis by nearly 4 inches (10 centimeters).

The temblor, which struck Friday afternoon near the east coast of Japan, killed hundreds of people, caused the formation of 30-foot walls of water that swept across rice fields, engulfed entire towns, dragged houses onto highways, and tossed cars and boats like toys. Some waves reached six miles (10 kilometers) inland in Miyagi Prefecture on Japan's east coast.

The quake was the most powerful to hit the island nation in recorded history and the tsunami it unleashed traveled across the Pacific Ocean, triggering tsunami warnings and alerts for 50 countries and territories as far away as the western coasts of Canada, the U.S. and Chile. The quake triggered more than 160 aftershocks in the first 24 hours — 141 measuring 5.0-magnitude or more.

The quake occurred as the Earth's crust ruptured along an area about 250 miles (400 kilometers) long by 100 miles (160 kilometers) wide, as tectonic plates slipped more than 18 meters, said Shengzao Chen, a USGS geophysicist.

Japan is located along the Pacific "ring of fire," an area of high seismic and volcanic activity stretching from New Zealand in the South Pacific up through Japan, across to Alaska and down the west coasts of North and South America. The quake was "hundreds of times larger" than the 2010 quake that ravaged Haiti, said Jim Gaherty of the LaMont-Doherty Earth Observatory at Columbia University.

The Japanese quake was of similar strength to the 2004 earthquake in Indonesia that triggered a tsunami that killed over 200,000 people in more than a dozen countries around the Indian Ocean. "The tsunami that it sent out was roughly comparable in terms of size," Gaherty said. "[The 2004 tsunami] happened to hit some regions that were not very prepared for tsunamis ... we didn't really have a very sophisticated tsunami warning system in the Indian Ocean basin at the time so the damage was significantly worse."

The Japanese quake comes just weeks after a 6.3-magnitude earthquake struck Christchurch on February 22, toppling historic buildings and killing more than 150 people. The timeframe of the two quakes have raised questions whether the two incidents are related, but experts say the distance between the two incidents makes that unlikely.

"I would think the connection is very slim," said Prof. Stephan Grilli, ocean engineering professor at the University of Rhode Island.

CNN's Ivan Cabrera contributed to this report

(Source: <http://www.cnn.com/2011/WORLD/asiapcf/03/12/japan.earthquake.tsunami.earth/>)

We have CNN reporting that the Earth's Axis actually shifted during the Great Japanese Earthquake. Similar remarks were made after the Indonesian quake a few years ago.

I mentioned earlier that it is pretty well accepted that the Earth has gone through polar shifts before. There is an everyday fact that is staring everyone in the eye and that gets ignored. The earth is already tilted a little more than 23 degrees already; it is not on a zero axis. If it can be accepted that changes have happened before, then perhaps at one time the Earth was at a zero-degree axis and wobbled to 23 degrees during some cataclysm or during a normal axis change that we're told happens from time to time.

Setting those things aside for a moment, we have to ask the question if this whole thing has a Biblical component? Does the Bible mention such things that will happen in the last days? Are these things predicted? What I am going to do is to present Isaiah, chapter 24 in the King James Version format first, and then present it using the Hebrew word study that I did in regard to the chapter. The word study text will be below the KJV text so that you can see the comparison. You will see that Yahweh did tell us about earth changes that will occur during our time in history. The text in black font are the original KJV texts while the text in red are the Hebrew word meanings text:

Isaiah 24:

1 Behold, the Lord maketh the earth empty, and maketh it waste, and turneth it upside down, and scattereth abroad the inhabitants thereof.

1 Behold, YHVH makes the Whole Earth a waste and devastation, and twists and distorts the surface, and scatters the inhabited places.

2 And it shall be, as with the people, so with the priest; as with the servant, so with his master; as with the maid, so with her mistress; as with the buyer, so with the seller; as with the lender, so with the borrower; as with the taker of usury, so with the giver of usury to him.

*2 And it shall be, as with the people, so with the priest; as with the servant, so with his master; as with the maid, so with her mistress; as with the buyer so with the seller; as with the lender, so with the borrower; as with the taker of credit, so with the giver of credit to him. *Note that this verse hasn't changed at all.*

3 The land shall be utterly emptied, and utterly spoiled: for the Lord hath spoken this word.

3 The land shall be laid waste and made void and plundered and spoiled, for YHWH has spoken this word.

4 The earth mourneth and fadeth away, the world languisheth and fadeth away, the haughty people of the earth do languish.

4 The land laments and withers and falls away, the fertile and inhabited earth sinks down and droops, the prideful people of the whole world become weak and exhausted (humbled).

5 The earth also is defiled under the inhabitants thereof; because they have transgressed the laws, changed the ordinance, broken the everlasting covenant.

5 The whole earth is polluted and corrupt under its inhabitants because they made obsolete and perished the regarded the Mosaic Law and overstepped and transgressed the statutes, decrees and civil enactments prescribed by Yahweh, and violated the perpetual divine ordinance given with signs and pledges.

6 Therefore hath the curse devoured the earth, and they that dwell therein are desolate: therefore the inhabitants of the earth are burned, and few men left.

6 Therefore a curse (Heb. Alah) consumes and destroys and those that live therein are guilty and suffer punishment: Therefore those that dwell on the earth are burned and charred and they are very few in number and few of mankind shall remain alive.

7 The new wine mourneth, the vine languisheth, all the merryhearted do sigh.

7 Literal word for word.

8 The mirth of tabrets ceaseth, the noise of them that rejoice endeth, the joy of the harp ceaseth.

8 Literal word for word.

9 They shall not drink wine with a song; strong drink shall be bitter to them that drink it.

9 Literal word for word.

10 The city of confusion is broken down: every house is shut up, that no man may come in.

10 The city of vanity, the place of chaos is crushed and violently rent, every house containing a family is closed up and the people therein are like prisoners at home so that no man can enter in or be numbered.

11 There is a crying for wine in the streets; all joy is darkened, the mirth of the land is gone.

11 There is an outcry and shouting for wine outside (the house) and all joy and gladness has (Heb. Arab) become darkness and has set like the setting sun, all rejoicing on the whole Earth is removed.

12 In the city is left desolation, and the gate is smitten with destruction.

12 In the guarded city remains waste, horror and appallment, the city gate is beat to pieces and shattered with ruin.

13 When thus it shall be in the midst of the land among the people, there shall be as the shaking of an olive tree, and as the gleaning grapes when the vintage is done.

13 When thus it shall be in the Land of Israel among the people, there shall be a striking off of an olive tree, and as the gleaning grapes, as grapes when the vintage is brought to an end.

14 They shall lift up their voice, they shall sing for the majesty of the Lord, they shall cry aloud from the sea.

14 They shall lift up their voice, they shall cry aloud for the majesty of YHVH, they shall shout with an ear-piercing loudness from the Great Basin of The Temple Court.

15 Wherefore glorify ye the Lord in the fires, even the name of the Lord God of Israel in the isles of the sea.

15 Wherefore glorify you YHVH in the fiery light of revelation, even the name of YHVH Elohim of Israel in the far off places of the sea.

16 From the uttermost part of the earth have we heard songs, even glory to the righteous. But I said, My leanness, my leanness, woe unto me! the treacherous dealers have dealt treacherously; yea, the treacherous dealers have dealt very treacherously.

16 From the farthest parts of the Earth have we heard songs, even glory to the righteous. But I have said my wasting, my wasting, woe is me! The dealers that work deceitfully have worn the garment of treachery, and have dealt very treacherously.

17 Fear, and the pit, and the snare, are upon thee, O inhabitant of the earth.

17 Terror and dread and the pit, and the trap or snare are upon the inhabitants of the whole Earth.

18 And it shall come to pass, that he who fleeth from the noise of the fear shall fall into the pit; and he that cometh up out of the midst of the pit shall be taken in the snare: for the windows from on high are open, and the foundations of the earth do shake.

18 And it shall come to pass, that he who flees from the noise of the fear shall fall into the pit; and he that comes up out of the midst of the pit shall be captured; for the windows from elevated places shall be thrown open and foundation (singular) of planet Earth shall be made to shake.

19 The earth is utterly broken down, the earth is clean dissolved, the earth is moved exceedingly.

19 The whole inhabited Earth is displeasingly wicked, the whole Earth is split and cracked through and shattered, planet Earth is tottered and greatly shaken.

20 The earth shall reel to and fro like a drunkard, and shall be removed like a cottage; and the transgression thereof shall be heavy upon it; and it shall fall, and not rise again.

20 The whole of planet Earth will be unstable and wade around, it will move and wander like a drunk person, and shall be tottered like a hut without a foundation; and the punishment for transgression will be heavy and it will fall as in a violent death and will rise up not again.

21 And it shall come to pass in that day, that the Lord shall punish the host of the high ones that are on high, and the kings of the earth upon the earth.

21 And it will come to pass in that time, that YHVH shall punish and call into account angels, nobles of angelic order that are in elevated places and the King (singular) of the whole inhabited world on Earth's visible surface.

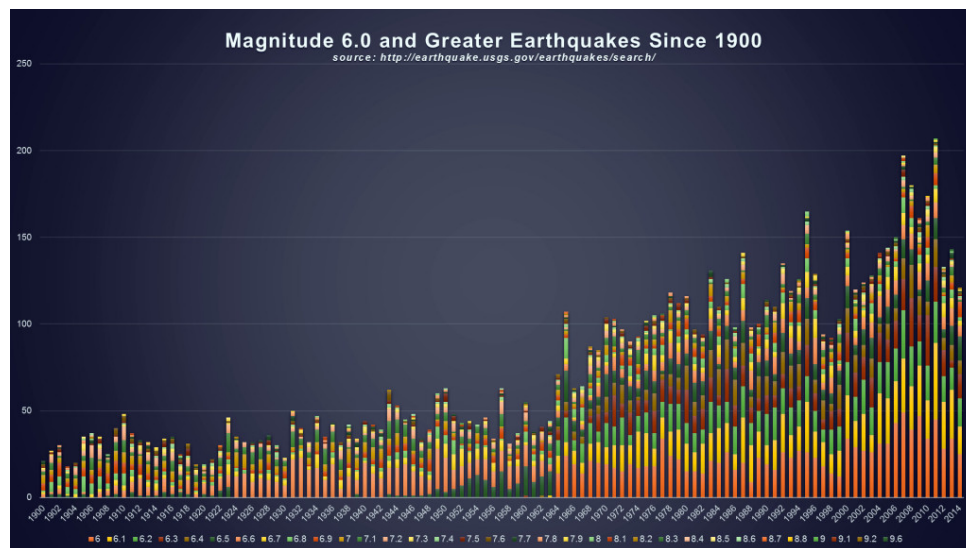
22 And they shall be gathered together, as prisoners are gathered in the pit, and shall be shut up in the prison, and after many days shall they be visited.

22 And they shall be taken away, a collection of prisoners to a collected gathering into the pit, and shall be imprisoned and after a multitude of days they will be called up and punished.

23 Then the moon shall be confounded, and the sun ashamed, when the Lord of hosts shall reign in mount Zion, and in Jerusalem, and before his ancients gloriously. Isaiah 24: 01-23

23 The moon shall demonstrate shame, and the Sun and its heat will be delayed because of shame, when YHVH of the Heavenly (warrior) angels will become King on the mountain where Yerushalayim (Jerusalem) is placed and in the city that stands for teaching of peace, and before the ancient ones, in honor, splendor and glory.

All we can say is “wow!” In one chapter of Isaiah, Yahweh has described both the condition of the physical Earth and humanity during the last days. Skeptics are quick to say that there have always been earthquakes that ravage the earth, but they would be remiss to question the intensity and frequency of the quakes that have occurred over the past twenty years. The following graph, attained from the USGS, shows that the intensity and frequency of powerful earthquakes has indeed increased fourfold from the last century. It is hard to argue with a graph coming from the USGS, a secular governmental source:



(Source: <http://www.earthquake.usgs.gov/earthquakes/search/>)

Another good source is the secular news media, who are slanted away from religion and toward worldly explanations of events. Below is an article from NBC News:

Worldwide Surge in Great Earthquakes Seen In Past Ten Years

By Linda Carroll

The annual number of “great” earthquakes nearly tripled over the last decade, providing a reminder to Americans that unruptured faults like those in the northwest United States might be due for a Big One.

Between 2004 and 2014, 18 earthquakes with magnitudes of 8.0 or more rattled subduction zones around the globe. That’s an increase of 265 percent over the average rate of the previous century, which saw 71 great quakes, according to a report to the annual meeting of the Geological Society of America this week in Vancouver, British Columbia.

It's clear that recent "great" earthquakes "triggered" related major quakes, says study author Thorne Lay, distinguished professor of earth and planetary sciences at the University of California, Santa Cruz.

"If we look at all earthquake magnitudes, the past 10 years is not unusual in terms of the rate of events; the rate increases are just seen for events with magnitudes larger than 7.5 or so," he said. "This suggests that great events were 'catching up' on the plate boundary motions in several regions with fortuitous similar timing."

And by fortuitous, Lay means that he thinks it's just coincidence that all those big earthquakes happened over the last 10 years. ([Read full article here](#))

(Source: <http://www.nbcnews.com/science/science-news/worldwide-surge-great-earthquakes-seen-past-10-years-n233661>)

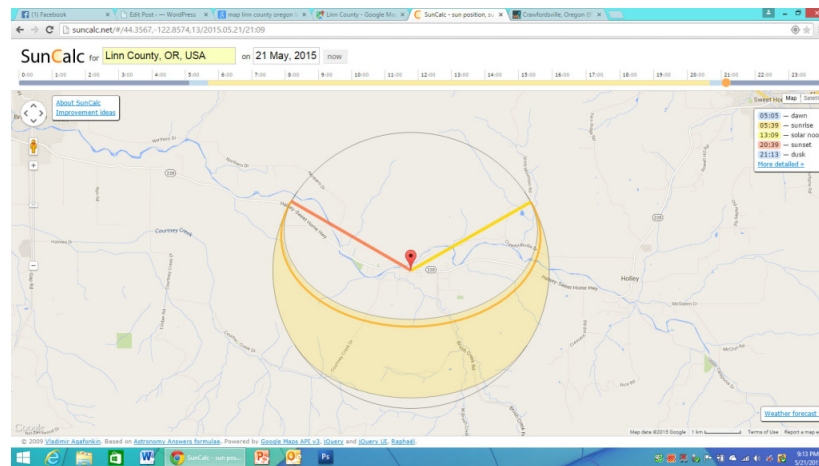
But what about pole axis changes? Is there any credibility to that notion? It has been noted that it has happened before according to scientists. For some reason, most scientists think that in our current time that the earth has come to a stasis, meaning that it has settled down and it's not exhibiting what it has exhibited in the past. These same scientists also strive to prove that "evolution" is a fact, yet they explain that in our current time, the mass mutations that occurred to turn one species into another has also come into a time of stasis, explaining that this is the reason we don't see those mutations happening currently. However, the earth is not in stasis, and it is actively showing us that fact. As shown above, earthquakes have increased fourfold over the past century. There are currently some 30 volcanos' actively erupting as of this date. The weather around the world seems to be changing in a natural cycle that is being blamed on mankind. One good site that talks about the changing pole theory along with other things can be found at: <http://viewzone2.com/changingnorthx.html>

We're told that the Earth will wander around like a drunkard:

20 The whole of planet Earth will be unstable and wade around, it will move and wander like a drunk person, and shall be tottered like a hut without a foundation; and the punishment for transgression will be heavy and it will fall as in a violent death and will rise up not again.

Almost everyone agrees that the Earth wobbles in its rotation. The wobble is slight and from a layman's standpoint is should not be noticeable. Because of my curiosity, I looked at a sun chart for my latitude. I noticed that the sun does rise at a point to the north, not quite true

northeast, which would be 45 degrees, but in the mid 30 degree mark. Here is the map for my location as of this date, May 21, 2015:



As was mentioned earlier, the Inuit People in Greenland, Canada and Alaska have told NASA that the sun rose 3 days earlier and in a different location. This doesn't necessarily mean that the pole has shifted in a permanent fashion, but that a wobble might have occurred. According to the chart below, the sun should on the Summer Solstice, rise at 33.5 degrees north of due east, simply because where I live is located at 44.34 degrees north latitude. In turn, it should rise at 33.5 degrees south of due east during the Winter Equinox. The only way to know for sure is to have a grid line laid out in the yard on or around the 21st of June and/or the 21st of December. Simple geometry should give the answer as to if there has indeed been a wobble or not. Still, if it doesn't appear that a wobble is presently occurring, it is possible that it did three years when the Inuit people noticed the difference in the sunrise, both in location and the date. I would be interested if others do the same experiment and let me know what they come up with.

How Latitude Affects the Direction of Sunrise and Sunset

Now that you know how the date affects the direction of sunrise and sunset, let's look at the effect of latitude on this direction.

The angular difference between the direction of sunrise and due east, and the direction of sunset and due west is called the sun's amplitude.

The sun's maximum amplitude is seen on each June and December solstice. The exact maximum amplitude depends on your latitude. The farther north you go in the northern

hemisphere or the farther south you go in the southern hemisphere, the greater is the sun's maximum amplitude.

The following table gives the sun's maximum amplitude for several latitudes:

	Sun's Maximum Amplitude
	25
Degrees of Latitude	26
(North or South)	27
40	29
45	31
50	34
55	38
60	44
65	53
	71

- **Example.** *According to this table, at latitude 30 degrees (North or South) the sun will rise and set 27 degrees away from due east and due west on both solstices, the dates of maximum amplitude.*

(Source: http://www.land-navigation.com/direction_of_sunrise_and_sunset.html)

The Earth spins in space in the same manner as a top spins on a tabletop. As the top spins it often wobbles, especially as the spinning becomes less and less. Much like the drunk men, it totters. Notice that as time progresses, the top totters more and more until it tips allowing the inertia of the table to stop it. Click on the link below to watch a video of a top wobbling:

<https://youtu.be/R6lT4tNadKM>

The Earth does not spin on a table. It is held stable mostly by its spin and by the Sun's attraction. Other bodies affect the Earth and cause inertia which causes slowing and/or a wobble. The top on the tabletop, while experiencing inertia was held in place by its spin and also by the tabletop. The level tabletop allowed the top to remain in one place, much as the sun's attraction keeps the earth in one level plane. The direction in which the earth spins is the same that the other planets spin in, meaning that they were all created at the same time. For instance, if you could create a ball that would spin and would release other balls as it spins, the little balls would spin in the same direction.

Another factor that causes the earth so spin is that the Earth is like an electric motor. In an electric motor, to opposite forces are placed on two (at least two) electrically charged coils. The coils are attracted to the magnets and the electrical coils go back and forth, positive to negative, creating attraction to the magnets. I'm not the only one that equates the Earth to an electrical motor, others have, including one man, named R.J. Noveroske, a medical doctor. The article was published in the Gadsden Times, in Gadsden, Alabama, on February 26, 1979

Earth Said Giant Electric Motor

By Paul Harvey

Published In: The Gadsden Times – Gadsden, Alabama – February 26, 1979

Why does the earth turn?

Assorted scientists have asked the question for generations and they have left it unanswered.

Perhaps if we could figure out what makes the Earth turn we could harness its energy for other uses.

A medical doctor in Evansville, Ind. R.J. Noveroske, thinks he knows and it can't cost us anything to hear him out.

The Indiana State Medical Assn. was sufficiently impressed with his treatise that it was republished in the official journal of that association.

And all of us, however skeptical, have to be impressed at least with the audacity of any visionary who presumes to define what makes the world turn.

In essence, Dr. Noveroske is convinced that the planet Earth is a “gigantic electric motor.”

An electric motor, of course, consists of a rotor with its internal magnetic field surrounded by an external magnetic field, the one responding in rhythm to the other.

Evidence? Well, we know that the Earth has a magnetic core with North and South poles and that there is a strong field of particulate radiation around the Earth – the Van Allen Belt.

This belt of concentrations of electrons and protons trapped by the Earth’s magnetic field is shaped and reshaped as the Earth moves around the sun.

So, if the action–reaction cycle is what causes the Earth to turn like the rotor of a motor, the Sun is the ultimate source of the turning power.

Understandably, when you and I are accustomed to the A.C. electric motors turning at 3,600 revolutions per minute, it is difficult for us to think of anything which turns only once every 24 hours as “a motor.”

But when you consider the torque necessary to turn such a huge mass, it is impressive that we on the surface of the “rotor” are moving through space – on the surface of a spinning sphere the circumference of which is about 24,000 miles. While standing still, we are moving 1,000 miles an hour! Shouldn’t that blow your hair!

Physicists and astronomers have long held to the Elzasser Theory that planet Earth is a generator, that it rotates in a frictionless environment on nothing more than momentum.

But that widely held theory has led no place as far as harnessing environmental electricity is concerned.

Now here comes a Hoosier medical doctor daring to advance the “revolutionary” theory that the Earth, instead of a generator, is a motor.

And this intriguing theory crosses my desk at the same time that I hear from electrical engineers who have measure unexplained induced “current” in the Alaska pipeline.

An interesting if insignificant foot note: In Polish the name “Noveroske” literally means “man who goes backward.”

(Source: <https://news.google.com/newspapers?nid=1891&dat=19790226&id=JJ8fAAAAIBAJ&sjid=GNYEAAAIBAJ&pg=1442,4021244&hl=en>)

So how is the earth unlike an electric motor? A big difference is that the electric motor has a housing that is stationary. It has bearings that keep everything in line. The Earth on the other hand does not have a housing. This is seen in that the Earth has a wobble. How long the Earth has had a wobble is anyone's guess. There is speculation that before the flood of Noah's time the Earth was at a zero-degree tilt. Many speculate that a large body entered the solar system and passed close enough to Earth that it caused the tilt. Others speculate that a large comet struck the earth before the flood and that its impact not only caused the 23 degree tilt, but that it also shattered what was once a water or ice canopy that surrounded Earth causing the rain, and also that it shattered the surface of the planet and caused the "fountains of the deep" to rupture and flood the Earth. It is possible that the wobble started at that time, right after the tilt began and that the Earth has been wobbling for the past 4500 or so years.

We have to look at the Japanese and Indonesian earthquakes that occurred just a few years ago. What again was the effect of the quakes? An article in National Geographic helps us to understand just what happened to the earth. It explains what the CNN article at the beginning of this blog illustrated and accentuates it a bit more:

Japan Earthquake Shortened Days, Increased Earth's Wobble

*By Richard A. Lovett, for National Geographic News
Published March 16, 2011*

The magnitude 9.0 earthquake that struck Japan last Friday was powerful enough to shorten Earth's day by 1.8 microseconds and throw an extra 6.7 inches (17 centimeters) into the planet's wobble, scientists say.

That doesn't mean shockwaves from the event somehow knocked Earth off its north-south axis, around which the planet revolves.

Instead the quake shifted what's called Earth's figure axis, an imaginary line around which the world's mass is balanced, about 33 feet (10 meters) from the north-south axis.

Earth naturally wobbles slightly as it spins, because shifting surface mass such as melting glaciers and moving ocean currents can throw the planet off balance.

Data from high-precision GPS instruments show that parts of Japan shifted by as much as 13 feet (4 meters) as the fault plates lurched due to the earthquake. This allowed scientists to calculate how much Earth's overall mass distribution had shifted and thus how much the wobble was affected.

The shifting mass also affected the planet's spin rate, according to geophysicist Richard Gross, of NASA's Jet Propulsion Laboratory in Pasadena, California. He compares what happened to a figure skater pulling her arms closer to her body, causing her to spin faster.

Because Earth is big, the effect is tiny—a microsecond is only a millionth of a second. For most of us, Gross said, "it has no real practical consequence."

Researchers are more intrigued by the change in Earth's wobble, which could inform future space missions, and the data collected on small earthquakes leading up to the main event, which may help with earthquake prediction.

Japan Earthquake Data "Unbelievably Good"

Similar changes to Earth's mass distribution were calculated from GPS data obtained during the 2004 Sumatra earthquake and the 2010 Chile earthquake. In the case of Sumatra, the change in the length of the day was larger: 6.8 microseconds.

But for the Japan earthquake, the change in Earth's wobble was more than twice as large as those calculated for the 2004 and 2010 events.

That's exciting, Gross said, because the wobble is large enough that scientists might actually be able to measure it, not just calculate it, by looking for small changes to Earth's tilt.

Still, since other factors also redistribute mass in the form of air and water, random changes to Earth's wobble might mask the effect of the earthquake.

(Related: "Japan Battles to Avert Nuclear Power Plant Disaster.")

Other geophysicists say that there are even more exciting things that can be done with the GPS data from the Japan earthquake.

For example, Japanese GPS instruments, strain meters, and seismometers recorded dozens of smaller quakes leading up to the main event, said Ken Hudnut, a geophysicist at the U.S. Geological Survey's Pasadena office.

Scientists poring over the data will be trying to figure out if there was anything unusual in the prior earthquakes that might have indicated they were foreshocks to a bigger event, rather than more ordinary tectonic rumblings.

(Also see "Japan Earthquake Not the 'Big One'?)")

"The question is, did the GPS or strain meters show a precursor," Hudnut said.

"Because if they did, it will revolutionize earthquake research forever."

In Sumatra, Hudnut added, the GPS data was “pretty good.” In Chile it was “much better,” and for Japan, the positioning and nature of the instruments made the data “unbelievably good.”

“We may not get another data set like this until I don’t know when. Here, we have a monster earthquake not too far offshore, and GPS instruments along the coast,” he said. “So much of what scientists do is about getting the right instruments in the right position to record some natural phenomenon, so we can understand it better. If there was anything precursory associated with those foreshocks, it should have been seen on that array of instruments.”

(Related: “Major Earthquake Due to Hit Southern California, Study Says.”)

Earth’s wobble calculations aren’t relevant to this particular quest, NASA’s Gross said, but they are more than just a curiosity. Understanding Earth’s spin movement is critical in space launches, for instance.

“When we navigate spacecraft to land a rover on Mars, we have to be able to account for changes in the Earth’s rotation in order to [launch so that we] precisely land the rover where we want to,” he said. “If we didn’t, we might miss Mars altogether.”

(Source: <http://news.nationalgeographic.com/news/2011/03/110316-japan-earthquake-shortened-days-earth-axis-spin-nasa-science/>)

The article says that the quake changed the Earth’s Figure Axis. The Earth’s rotation is a lot like a washing machine’s spin cycle. If everything is balance in the load, or if there are no clothes in the machine while it spins you can barely notice that the machine is spinning. However, if you change the load ever so slight you start to notice that the machine starts to quiver and if the load is grossly unbalanced, the whole washer will shake violently and make a terrible noise. Where the Earth is concerned, the movement of a land mass by 33 feet isn’t much, but the Indonesian quake displaced Earth’s mass too, as to most large quakes. IF the Japan quake increased Earth’s wobble, and so did the Indonesian quake, then the displacement could make a difference. Now, take that top that we saw spinning. It was already unstable in that it always seemed to have some degree of wobble. If you could take a thousandth of a microgram and attached it to the side/top it would increase a wobble significantly. What happens when a tops start to wobble; they eventually falls over. Could the Earth possibly topple over? Well, that is one that we’re going to have just wait to see. There is a potential for sure, but just like the drunk that struggles not to topple over, and who tries to compensate with using the sensors in his ears to cause his brain to exert forces in opposite fashion, the Earth has the Sun to keep it in line, and it also has it’s maker to dictate when and how it will act in the vacuum of space. The very one, who in Isaiah 42 says he will contort and twist the earth. And finally, to give more light to earth and celestial changes, we have words of Yeshua in the book of Matthew, and the words of Yohanan as he was showed the End of Days, by Yeshua Ha Mashiach:

Immediately after the tribulation of those days shall the sun be darkened, and the moon shall not give her light, and the stars shall fall from heaven, and the powers of the heavens shall be shaken: And then shall appear the sign of the Son of man in heaven: and then shall all the tribes of the earth mourn, and they shall see the Son of man coming in the clouds of heaven with power and great glory. Matthew 24:29-30

There are so many parallels with the scripture in Isaiah and the scriptures in Matthew and revelation. Manifestations of the Sun and the Moon in all three scriptures, mourning by people, the fallen angels falling to earth and later judged and the return of Yeshua to become King over the entire earth. When the Tanakh and Brit Hadasha say that there will be an Earth wobble, I tend to believe it; and coupled with secular science backing up the Word of Yahweh, there is no argument from anyone with any sort of intelligence and truth.

And I beheld when he had opened the sixth seal, and, lo, there was a great earthquake; and the sun became black as sackcloth of hair, and the moon became as blood; And the stars of heaven fell unto the earth, even as a fig tree casteth her untimely figs, when she is shaken of a mighty wind. And the heaven departed as a scroll when it is rolled together; and every mountain and island were moved out of their places. And the kings of the earth, and the great men, and the rich men, and the chief captains, and the mighty men, and every bondman, and every free man, hid themselves in the dens and in the rocks of the mountains; And said to the mountains and rocks, Fall on us, and hide us from the face of him that sitteth on the throne, and from the wrath of the Lamb: For the great day of his wrath is come; and who shall be able to stand? Revelation 6:12-17

The Earth does wobble, and judging from Isaiah's writing, it will become worse; twisting the land and contorting the surface of the planet. The thing that needs to be asked is are you prepared? I'm not worried about being physically prepared, but spiritually prepared. If your life fell down all around you could you handle it? If disaster swept away your whole family would you be able to cope? If you were killed by some freak accident or some large earth or celestial event do you know where your soul would go? These are important questions to consider. We live on an unstable world populated by unstable societies in an unstable universe. These are things that people should consider, and not wait to consider.

Think about what will happen if the earth would topple or would wobble uncontrollably? Life as we know it would be severely hampered. All communication would be lost seeing that all things go through satellite communication. Highway and travel infrastructures would be severely destroyed. Within minutes you would lose communications with all but those who are right around you. IF you survive, food would run out in just a couple of days and bands of criminals would be going from house to house sealing and killing. No wonder the population referred to in

Revelation called for the rocks and mountains to fall on them. All I can ask again is, are you prepared. If not pray to Yahweh Yeshua to give mercy and save your soul and then live a life that reflects what you have just done. The choice is yours, but time is short. Life is fragile and there are no guarantees.